

Linea Ganci

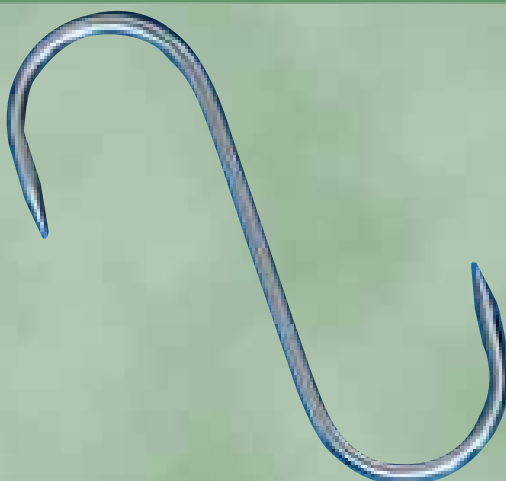
Art. 56/1

Gancio inox normale 1 punta

Standard inox hook 1 point

Crochet en inox normal 1 pointe

mm. 60x3	mm. 180x6
mm. 80x3	mm. 180x7
mm. 80x4	mm. 180x8
mm. 100x4	mm. 200x9
mm. 100x5	mm. 200x10
mm. 120x5	mm. 220x10
mm. 140x5	mm. 250x12
mm. 140x6	mm. 300x12
mm. 160x5	mm. 500x12
mm. 160x6	mm. 750x12
mm. 180x5	mm. 1000x12



Art. 56

Gancio inox normale 2 punte

Inox standard hook 2 points

Crochet en inox normal 2 pointes

mm. 80x4	mm. 160x5
mm. 100x4	mm. 160x6
mm. 100x5	mm. 180x5
mm. 120x5	mm. 180x6
mm. 140x5	mm. 180x7
mm. 140x6	mm. 180x8

Art. 57

Gancio inox laterale 1 punta
(100 gr.)

Side inox hook 1 point (100 gr.)

Crochet en inox latéral 1 pointe
(100 gr.)

mm. 185x7



Art. 58

Gancio inox ad ancora 3 punte

Anchor-shaped inox hook with 3 points

Crochet en inox à ancre 3 pointes

mm. 120x5
mm. 120x6
mm. 130x7



Art. 58/A

Gancio inox ad ancora 1 punta
Anchor-shaped inox hook with 1 point

Crochet en inox à ancre 1 pointe

mm. 130x7



Art. 58/B

Gancio inox 18/10 ad ancora 1 punta

Anchor-shaped inox 18/10 hook with 1 point

Crochet en inox 18/10 à ancre 1 pointe

mm. 130x7



Art. 95

Allonges inox 18/10 tranciato
Sheared inox 18/10 allonges
Allonges 3 trous en inox 18/10
trancés

mm. 170x6



Art. 95/A

Allonges inox 18/10 incrociato

Crossed inox 18/10 allonges
Allonges croisés 3 trous en
inox 18/10

mm. 130x4 mm. 130x5

Art. 59

Gancio inox per prosciutto

Inox hook for ham

Crochet en inox pour jambon

mm. 160x6
mm. 180x6



Art. 86

Gancio inox con anello libero

Inox hook with free ring

Crochet en inox avec anneau
libre

mm. 160x6 mm. 180x6



Art. 86/A

Gancio inox con anello saldato

Inox hook with welded ring

Crochet en inox avec anneau
soudé

mm. 160x6 mm. 180x6



Linea Ganci

Art. 62



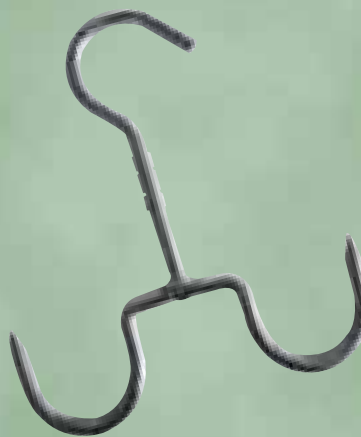
Gancio inox girevole

Swivel inox hook

Crochet en inox pivotant

mm. 220x9
mm. 240x10
mm. 260x10
mm. 280x12
mm. 300x12
mm. 500x12

Art. 62/A



Gancio inox girevole doppia presa

Two-holders swivel inox hook

Crochet en inox pivotant double prise

mm. 220x9
mm. 240x10
mm. 260x10
mm. 280x12

Art. 62/B



Gancio inox girevole doppia presa

Two-holders swivel inox hook

Crochet en inox pivotant double prise

mm. 220x9
mm. 240x10
mm. 260x10
mm. 280x12

Art. 62/C Ex Art. 91



Gancio inox girevole ancora

Swivel anchor-shaped inox hook

Crochet en inox pivotant à ancre

mm. 220x9
mm. 240x10
mm. 260x10
mm. 280x12

Art. 63



Gancio inox girevole 4 prese per polli

Four-holders swivel inox hook for poultry

Crochet en inox pivotant 4 prises pour poulets

mm. 220x6
mm. 220x10
mm. 220x12

Art. 63/A



Gancio inox a 4 prese per polli

Four-holders inox hook for poultry

Crochet en inox 4 prises pour poulets

mm. 160x6

Art. 64



Gancio inox girevole a 4 prese

Four-holders swivel inox hook

Crochet en inox pivotant 4 prises

mm. 320x6
mm. 300x8

Art. 64/A



Gancio inox girevole a 3 prese per polli

Three-holders swivel inox hook for poultry

Crochet en inox 3 prises pour poulets

mm. 300x8

Linea Ganci



Art. 60

Gancio inox girevole con anello

Swivel inox hook with ring

Crochet en inox pivotant avec anneau

mm. 180x6
mm. 200x10
mm. 230x12



Art. 60/A

Gancio inox girevole con anello 2 prese

Two-holders swivel inox hook with ring

Crochet en inox pivotant 2 prises avec anneau

mm. 180x6
mm. 200x10
mm. 230x12



Art. 60/B

Gancio inox girevole con anello 4 prese

Four-holders swivel inox hook with ring

Crochet en inox pivotant 4 prises avec anneau

mm. 200x6
mm. 220x10
mm. 230x12



Art. 90

Gancio inox girevole e snodato con anello (tipo Napoli)

Swivel and articulated inox hook with ring (Napoli model)

Crochet en inox pivotant et articulé avec anneau (modèle Napoli)

mm. 220x6
mm. 260x7
mm. 300x12



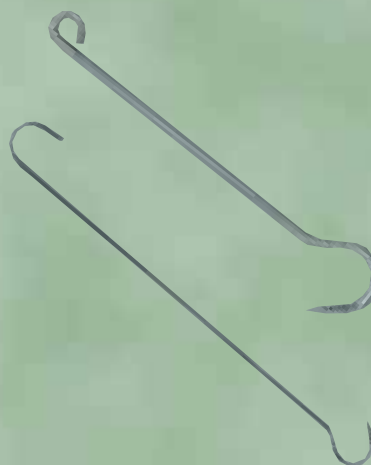
Art. 90/A

Gancio inox girevole e snodato con anello doppia presa

Swivel and articulated inox hook, double holders with ring

Crochet en inox pivotant et articulé double prise avec anneau

mm. 200x6



Art. 76

Gancio inox con anello per prolunga vari usi

Inox hook with ring for extension, several uses

Crochet long en inox avec anneau pour prolonge, usages diverses mm. 500x12

Art. 76/A

Gancio inox per insaccati

Inox hook for sausages

Crochet en inox pour saucisses mm. 600x6



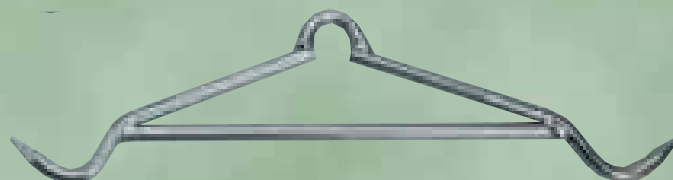
Art. 120

Gancio inox 18/10 c/anello per prolunga

Inox 18/10 hook with ring for extension

Crochet en inox 18/10 avec anneau pour prolonge

mm. 400x15



Art. 121

Appendi vitello inox 18/10

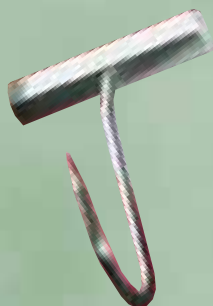
Inox 18/10 veal-hanger

Porte-veau en inox 18/10

mm. 600x15

Linea Ganci

Art. 61



Gancio inox con manico alluminio

Inox hook with aluminium handle

Crochet en inox avec manche en aluminium

mm. 165x7

Art. 61/A



Gancio inox con manico plastica

Inox hook with plastic handle

Crochet en inox avec manche en plastique

mm. 165x7

Art. 61/B



Gancio inox impugnatura ovale saldata

Inox hook with welded oval handle

Crochet en inox avec manche ovale soudé

mm. 180x8
mm. 200x10

Art. 74



Gancio inox 18/10 scorrevole

Sliding inox 18/10 hook

Crochet en inox 18/10 coulissant

mm. 100x6
mm. 120x9
mm. 140x12

Art. 74/A



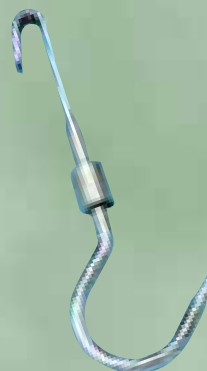
Gancio inox 18/10 scorrevole e chiuso

Closed and sliding inox 18/10 hook

Crochet en inox 18/10 coulissant et fermé

mm. 100x7

Art. 74/B



Gancio inox girevole-scorrevole

Swivel-sliding inox hook

Crochet en inox pivotant-coulissant

mm. 280x12

Art. 75



Gancio inox per carrucola

Inox hook for pulley

Crochet en inox pour poulie

mm. 120x12
mm. 150x15
mm. 180x18

Art. 68



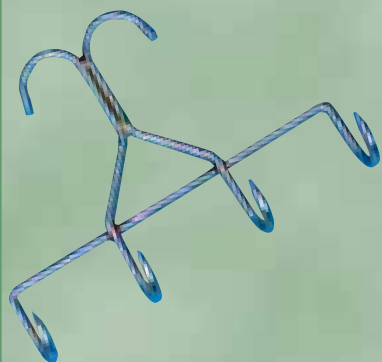
Gancio inox snodato per carrucola

Articulated inox hook for pulley

Crochet en inox articulé pour poulie

mm. 140x12
mm. 200x15

Linea Ganci

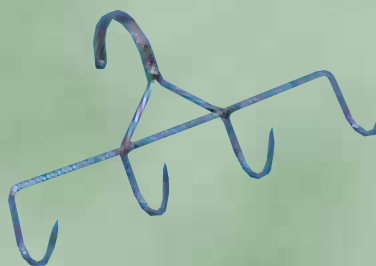


Art. 65

Portapancetta inox 4 prese
Four-holders inox bacon-hanger
Porte-lard en inox 4 prises
mm. 180x6 mm. 240x6

Art. 65/A

Portapancetta inox 18/10
4 prese
Four-holders inox 18/10 bacon-hanger
Porte-lard en inox 18/10
4 prises
mm. 180x6 mm. 240x6



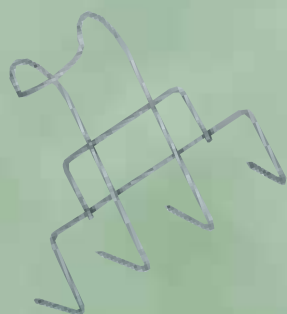
Art. 65/B

Portapancetta inox 4 prese, gancio rinversato

Four-holders inox bacon-hanger with reversed hook

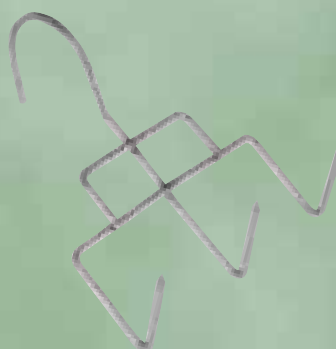
Porte-lard en inox 4 prises avec crochet inversé

mm. 180x6 mm. 240x6



Art. 65/C

Portaspeck inox 18/10
Inox 18/10 speck-hanger
Porte-speck en inox 18/10
mm. 160x4



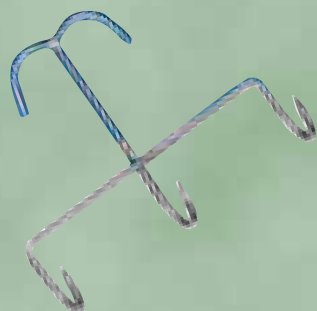
Art. 65/D

Gancio inox 18/10 porta speck laterale o rinversato

Side or reversed inox 18/10 hook for speck

Crochet en inox 18/10 lateral ou inversé porte-speck

mm. 160x4

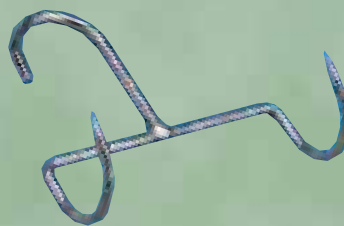


Art. 66

Portapancetta inox 3 prese
Three-holders inox bacon-hanger
Porte-lard en inox 3 prises
mm. 180x6

Art. 66/A

Portapancetta inox 18/10
3 prese
Three-holders inox 18/10 bacon-hanger
Porte-lard en inox 18/10 3 prises
mm. 180x6



Art. 67

Portapancetta inox 2 prese

Two-holders inox bacon-hanger

Porte-lard en inox 2 prises

mm. 120x5



Art. 67/A

Portapancetta inox 18/10 2 prese

Two-holders inox 18/10 bacon-hanger

Porte-lard en inox 18/10 2 prises

mm. 50x3



Art. 67/B

Portapancetta inox 18/10, 2 prese, gancio rinversato

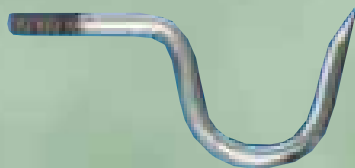
Two-holders inox 18/10 bacon-hanger with reversed hook

Porte-lard en inox 18/10, 2 prises, avec crochet inversé

mm. 85x4

Linea Ganci

Art. 77



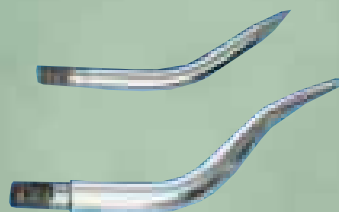
Gancio inox curvo per tubo

Curved inox hook for bracket

Crochet en inox coudé pour tube (support)

mm. 120x8
mm. 140x10
mm. 160x12
mm. 200x14

Art. 78



Gancio inox a corno per gancera (vedi art. 73)

Horn-shaped inox hook for bracket (see support art. 73)

Crochet en inox à corne pour support (voir art. 73)

mm. 100x10
mm. 170x15



Art. 79

Gancio inox 18/10 a corno per carrelli

Horn-shaped inox 18/10 hook for trolleys

Crochet en inox 18/10 à corne pour chariots

mm. 80x9



Art. 79/A

Gancio inox 18/10 curvo per carrelli

Curved inox hook for trolleys

Crochet en inox 18/10 coudé pour chariots

mm. 85x7 mm. 85x8



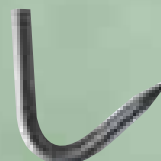
Art. 79/B

Gancio inox 18/10 a V per carrelli

V-shaped inox 18/10 hook for trolleys

Crochet en inox 18/10 en V pour chariots

mm. 85x7 mm. 85x8



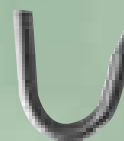
Art. 79/C

Gancio inox 18/10 curvo per carrelli

Curved inox hook for trolleys

Crochet en inox 18/10 coudé pour chariots

mm. 60x8



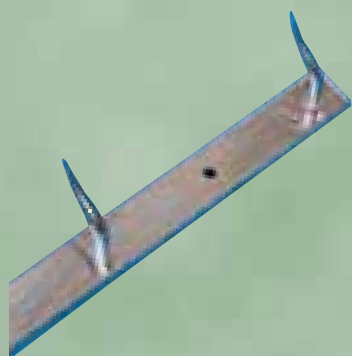
Art. 79/D

Gancio inox 18/10 curvo per carrelli

Curved inox hook for trolleys

Crochet en inox 18/10 coudé pour chariots

mm. 55x8



Art. 73

Barra piatta inox 18/10

Inox 18/10 flat bar

Barre plate en inox 18/10 (support)

mm. 50x10
mm. 60x10

Art. 73/A

Barra piatta in alluminio

Aluminium flat bar

Barre plate en aluminium (support)

mm. 60x14



Art. 73/B

Mensola completa in tubolare per barra piatta inox e alluminio

Fully equipped bracket in tubular for inox and aluminium flat bar

Pied tubulaire à seller pour barre plate en inox et aluminium (support)

Art. 73/C

Mensola inox 18/10 tranciata, completa di Fisher per barra inox e alluminio

Sheared inox 18/10 bracket, with Fisher for inox and aluminium flat bar

Equerre en inox 18/10 à visser complète de Fisher pour barre plate (support)



Linea Ganci

Art. 87



Crocchiera girevole inox
18/10 Tipo leggero
Crocchiera girevole inox
18/10 Tipo pesante

Inox 18/10 revolving round-hanger, light model
Inox 18/10 revolving round-hanger, heavy model

Chandelier pivotant pour
crochets en inox 18/10,
modèle léger
Chandelier pivotant pour
crochets en inox 18/10,
modèle lourd

Art. 88



Stella girevole per salumi

*Swivel star-shaped hook for
sausages*

Étoile pivotante pour
charcuterie

mm. 220x350x8
mm. 270x400x10
mm. 270x500x10
mm. 270x600x10
mm. 270x600x12

Art. 96



Punteruolo inox fermacarne
c/manico legno

*Inox meat holder pricker
with wooden handle*

Pique viande en inox avec
manche en bois

Art. 96/A



Punteruolo inox fermacarne
c/anello

*Inox meat-holder pricker
with ring*

Pique viande en inox avec
anneau

Art. 112



Crocchiera inox 18/10
Swiss-Norm

*Inox 18/10 round-hanger
Swiss-Norm*

Chandelier en inox 18/10
pour crochets Swiss-Norm

Kg. 3,3750

Art. 113

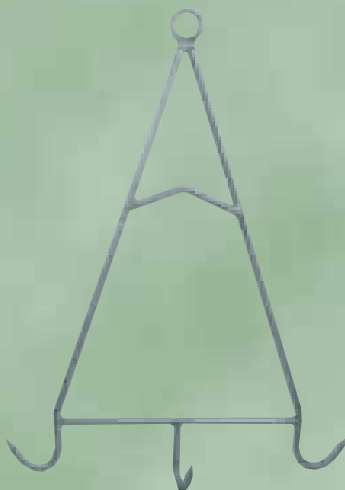


Grappolo inox 18/10 varie
misure

*Inox 18/10 vertical bar
hanger, several sizes*

Barre pour crochets verticale
en inox 18/10, plusieurs
mesures

Art. 114



Appendi vitello inox 18/10

Inox 18/10 veal hanger

Porte-veau en inox 18/10